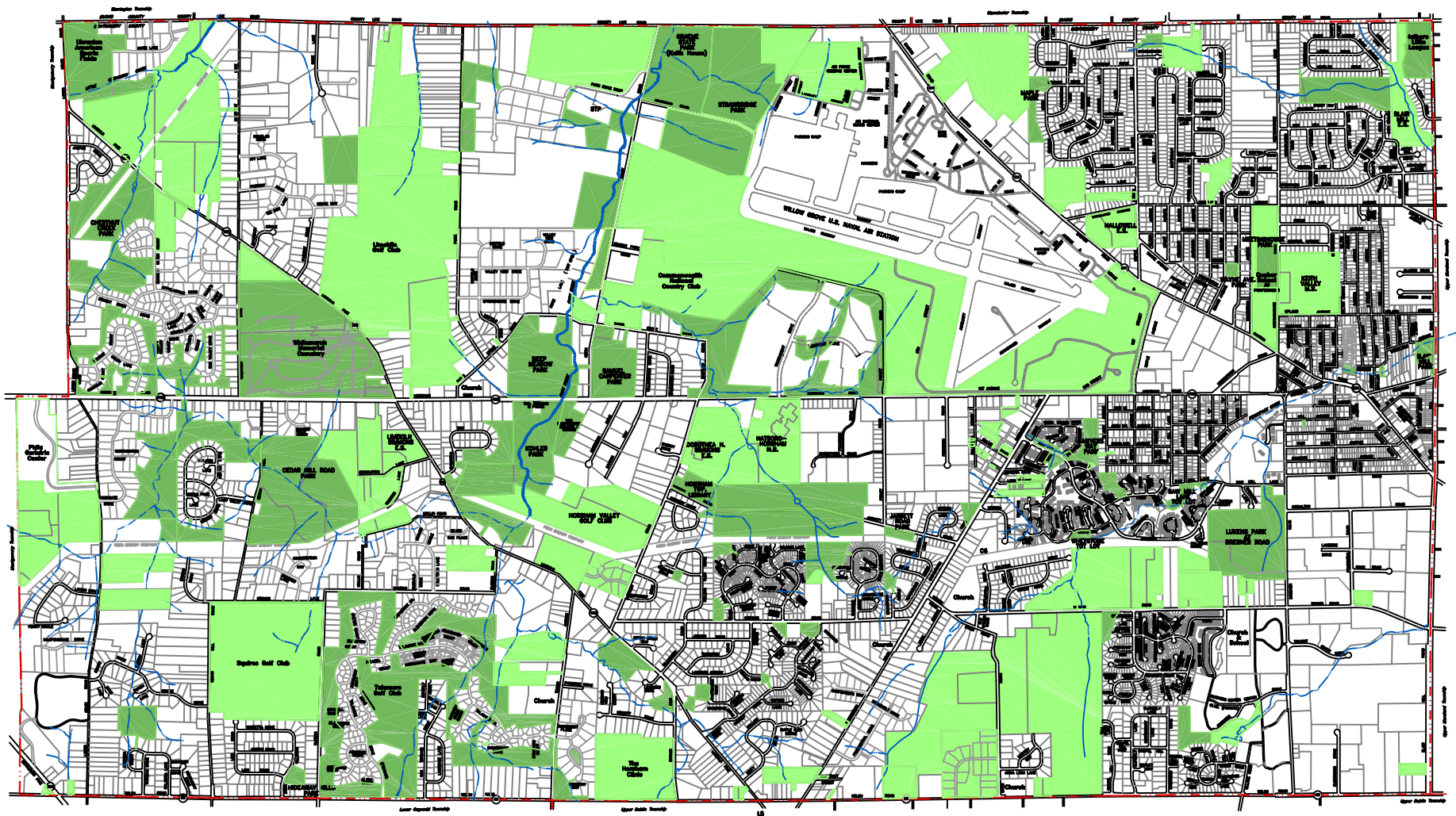
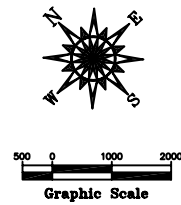


# Protected Lands Map



## LEGEND

- Permanently Protected Lands
- Temporarily Protected Lands  
(310 and 515 Open Space Covenants, Public School Properties, Public and Private Golf Courses, Private Camps and Other Institutional Land)



Horsham Township  
Montgomery County, PA

Protected Lands Map  
Open Space Plan Update

February 2005  
Revised: August 5, 2005

Prepared By:  
E. Van Rieker, AICP  
215 Old Church Road  
North Wales, PA 19454

Mapping Prepared by Keffish Design